

DIXON

GALLERY & GARDENS

HUGHES PAVILION GENERAL INFORMATION & AMENITIES

The Hughes Pavilion is a classically designed brick building featuring floor-to-ceiling windows and large skylights, catering kitchen, multi-stall restrooms, and outdoor patio spaces. The space includes an unlit white top tent over the main outside patio, installed seasonally (mid-March through mid-November).

This venue may be used for wedding events as well as corporate, nonprofit, and private events. Rental includes use of the whole venue, including all connected patios; garden areas are not included, except for wedding ceremony use.

CAPACITY

Capacity is 200 guests; going over capacity may result in a fee to cover wear-and-tear on the venue. Capacity for common setups:

- 125-150 cocktail-style/standing reception
 - Up to 200 if using the outside patios as well
 - 100 seated, theater-style
 - 25-35 seated, classroom-style
 - 20-30 seated, U-shape or square shape
 - 80-100 seated, round tables (10, 60" round tables with 8-10 chairs each)
 - 100-120 seated, long tables in rows (mix of 6ft. and 8 ft. tables)
 - 150-175 seated, table sizes vary, inside *and* on the main patio
-

AMENITIES*

- 10** 60" round tables
- 6** 48" round tables
- 11** 36" round table tops**
- 6** 30" round table tops**
- 4** 8ft. long/rectangular tables
- 9** 6ft. long/rectangular tables
- 100** Banquet chairs

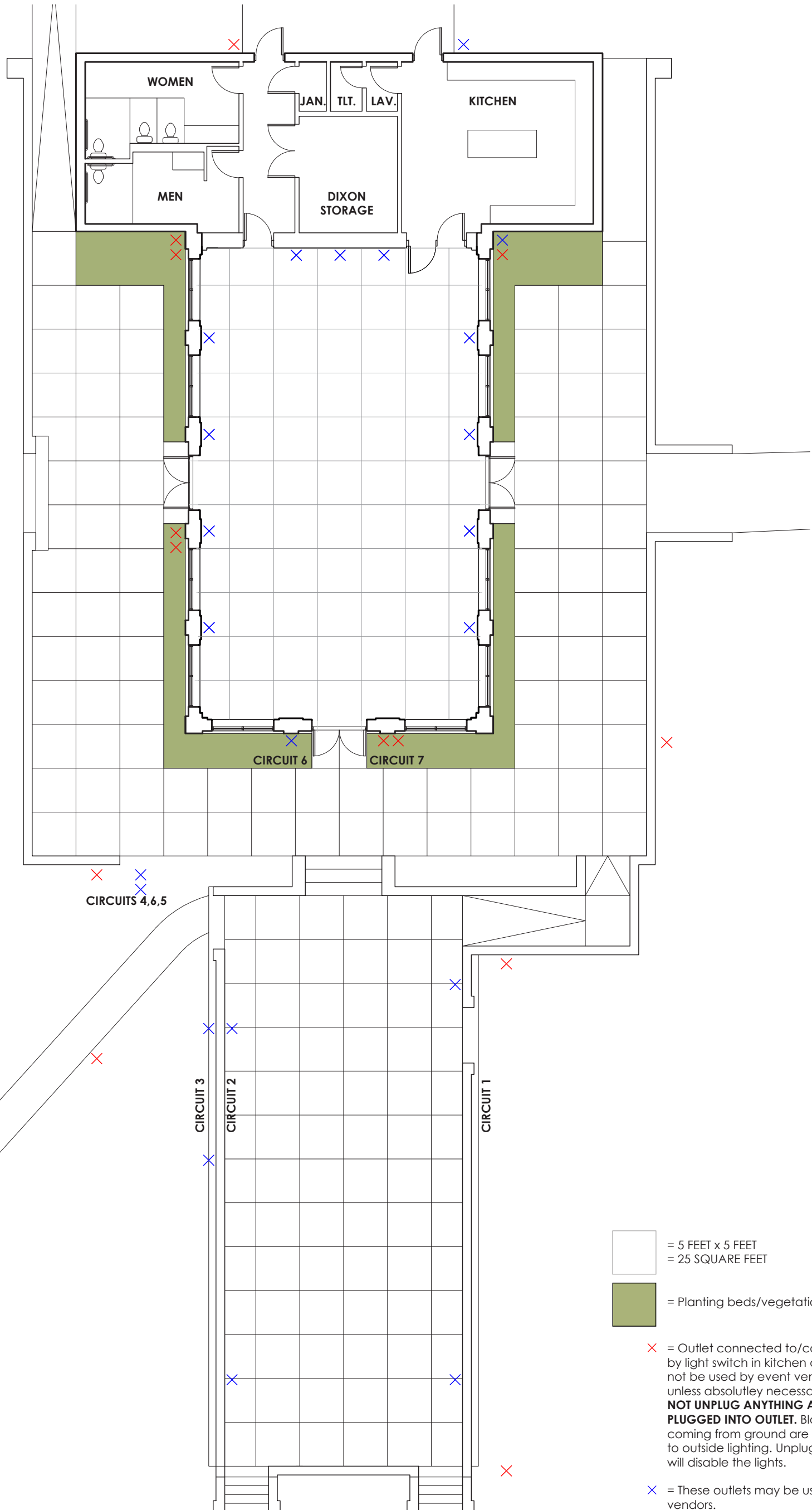
Projector screen (built-in/non-moveable) + *unequipped* AV cart (projector, speakers & mic, and laptop **not** included or available)

WiFi (Network name: DixonGardensGuest, Password: art2grow)

**These tops are used with detachable bases and poles to allow for seated or standing height. 9 adjustable poles, 19 seated height poles, and 6 standing height poles are available, along with 20 table bases.

*Please contact the Dixon at least two (2) weeks prior to your event to confirm availability.

DIXON
GALLERY & GARDENS
HUGHES PAVILION



□ = 5 FEET x 5 FEET
= 25 SQUARE FEET

■ = Planting beds/vegetation

✗ = Outlet connected to/controlled by light switch in kitchen and should not be used by event vendors unless absolutely necessary. **DO NOT UNPLUG ANYTHING ALREADY PLUGGED INTO OUTLET.** Black cords coming from ground are connected to outside lighting. Unplugging them will disable the lights.

✕ = These outlets may be used by vendors.

