

# DIXON

GALLERY & GARDENS

## HUGHES PAVILION GENERAL INFORMATION & AMENITIES

The Hughes Pavilion is a classically designed brick building featuring floor-to-ceiling windows and large skylights, catering kitchen, multi-stall restrooms, and outdoor patio spaces. The space includes an unlit white top tent over the main outside patio, to be installed seasonally (mid-March through mid-November).

This venue may be used for wedding events as well as corporate, nonprofit, and private events. Rental includes use of the whole venue, including all patios.

---

### CAPACITY

Capacity is 200 guests; going over capacity may result in a fee to cover wear-and-tear on the venue. Capacity for common setups:

- 125-150 cocktail-style/standing reception
  - Up to 200 if using the outside patios as well
- 100 seated, theater-style
- 25-35 seated, classroom-style
- 20-30 seated, U-shape or square shape
- 80-100 seated, round tables (10, 60" round tables with 8-10 chairs each)
- 100-120 seated, long tables in rows (mix of 6ft. and 8 ft. tables)
- 150-175 seated, table sizes vary, inside *and* on the main patio

---

### AMENITIES

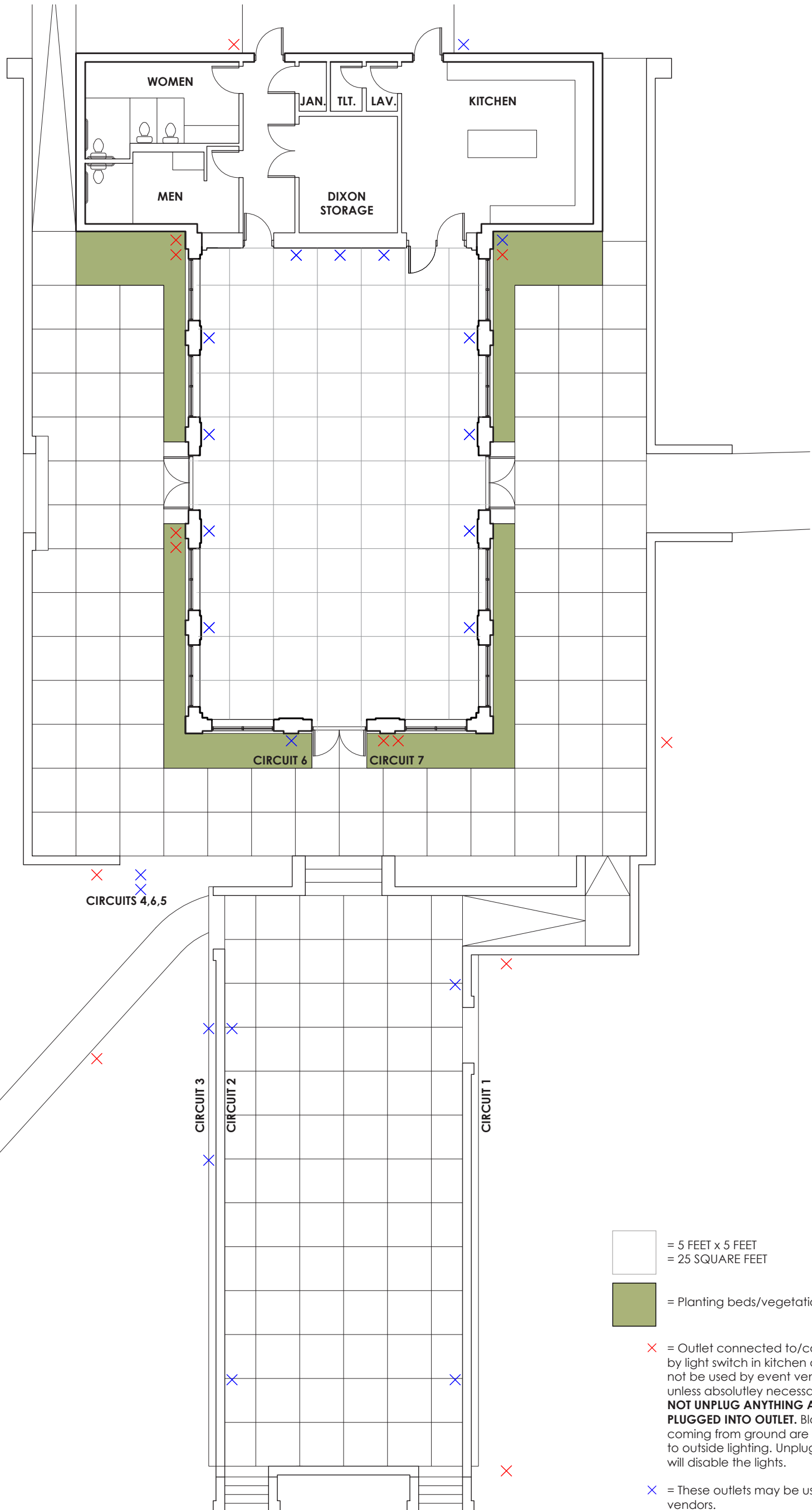
- 10** 60" round tables
- 6** 48" round tables
- 12** 36" round table tops\*
- 6** 30" round table tops\*
- 4** 8ft. long/rectangular tables
- 9** 6ft. long/rectangular tables
- 100** Banquet chairs

Projector screen (built-in/non-moveable) + *unequipped* AV cart (projector, speakers & mic, and laptop **not** included or available)

WiFi (Network name: DixonGardensGuest, Password: art2grow)

\*These tops are used with detachable bases and poles to allow for seated or standing height. 9 adjustable poles, 19 seated height poles, and 6 standing height poles are available, along with 20 table bases.

DIXON  
GALLERY & GARDENS  
HUGHES PAVILION



□ = 5 FEET x 5 FEET  
= 25 SQUARE FEET

■ = Planting beds/vegetation

✗ = Outlet connected to/controlled by light switch in kitchen and should not be used by event vendors unless absolutely necessary. **DO NOT UNPLUG ANYTHING ALREADY PLUGGED INTO OUTLET.** Black cords coming from ground are connected to outside lighting. Unplugging them will disable the lights.

✕ = These outlets may be used by vendors.

